

MEK3 Antibody
Rabbit mAb
Catalog # AP90876**Specification**

MEK3 Antibody - Product Information

Application	WB, IHC, FC, ICC, IP
Primary Accession	P46734
Reactivity	Rat
Clonality	Monoclonal
Other Names	
MEK3; MAP kinase kinase 3; MAPKK3; MAPK/ERK kinase 3;	
Isotype	Rabbit IgG
Host	Rabbit
Calculated MW	39318 Da

MEK3 Antibody - Additional Information

Dilution	WB~~1:1000 IHC~~1:100~500 FC~~1:10~50 ICC~~N/A IP~~N/A
Purification	Affinity-chromatography
Immunogen	A synthesized peptide derived from human MEK3
Description	Dual specificity kinase. Is activated by cytokines and environmental stress in vivo. Catalyzes the concomitant phosphorylation of a threonine and a tyrosine residue in the MAP kinase p38.
Storage Condition and Buffer	Rabbit IgG in phosphate buffered saline , pH 7.4, 150mM NaCl, 0.02% sodium azide and 50% glycerol. Store at +4°C short term. Store at -20°C long term. Avoid freeze / thaw cycle.

MEK3 Antibody - Protein Information**Name** MAP2K3**Synonyms** MEK3, MKK3, PRKMK3, SKK2**Function**

Dual specificity kinase. Is activated by cytokines and environmental stress in vivo. Catalyzes the concomitant phosphorylation of a threonine and a tyrosine residue in the MAP kinase p38. Part of a signaling cascade that begins with the activation of the adrenergic receptor ADRA1B and leads to the activation of MAPK14.

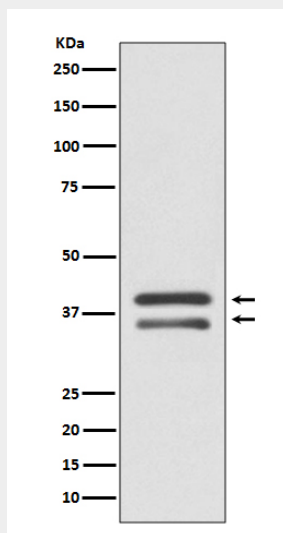
Tissue Location

Abundant expression is seen in the skeletal muscle. It is also widely expressed in other tissues

MEK3 Antibody - Protocols

Provided below are standard protocols that you may find useful for product applications.

- [Western Blot](#)
- [Blocking Peptides](#)
- [Dot Blot](#)
- [Immunohistochemistry](#)
- [Immunofluorescence](#)
- [Immunoprecipitation](#)
- [Flow Cytometry](#)
- [Cell Culture](#)

MEK3 Antibody - Images

Western blot analysis of MEK3 expression in HepG2 cell lysate.